

Aidite

EZPRINT-F1

LCD 3D Printer User Manual



Dear Consumers,

Thank you for choosing our products. For the best experience, please read the instructions before operating the Printer.

Our teams will always be ready to render you the best services. Please contact us via the phone number or e-mail address provided at the end when you encounter any problem with the printer.

For a better experience in using our product, you can also learn how to use the printer in the following ways:

- 1) View the accompanied instructions and videos in the U disk.
- 2) Visit our official website (www.aidite.com) to find relevant software/hardware information, contact details and operation and maintenance instructions.

NOTES

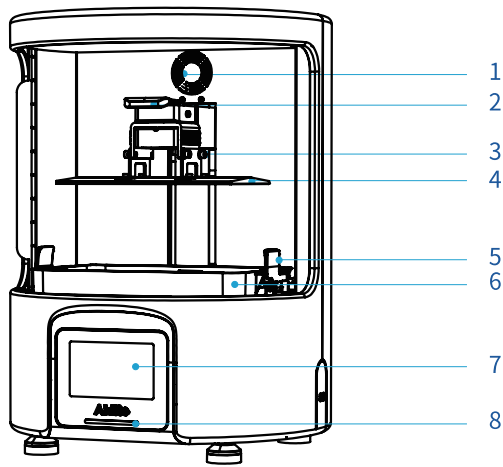
- 1 Do not use the printer any way other than described herein in order to avoid personal injury or property damage.
- 2 Do not place the printer near any heat source or flammable or explosive objects. We suggest placing it in a well-ventilated, low-dust environment.
- 3 Do not expose the printer to violent vibration or any unstable environment, as this may cause poor print quality.
- 4 Please use recommended resin for not to damage the machine.
- 5 Do not use any other power cable except the one supplied. Always use a grounded three-prong power outlet.
- 6 Please do not open the plastic cover during usage, otherwise the printing will be interrupted.
- 7 Do not wear cotton gloves when operating the printer, avoiding the burns, injury and machine damage caused by the moving parts.
- 8 Please wait a moment after the print is finished. And please wear gloves to take out the print by tools.
- 9 Clean the printer frequently. Always turn the power off when cleaning, and wipe with a dry cloth to remove dust, adhered printing plastics or any other material off the frame, guide rails, or wheels. Use glass cleaner or isopropyl alcohol to clean the print surface.
- 10 Children under 10 years should not use the printer without supervision.
- 11 This machine is equipped with a security protection mechanism. Do not manually move the nozzle or printing platform mechanism manually while booting up, otherwise the device will automatically power off for safety.
- 12 Users should comply with the laws and regulations of the corresponding countries and regions where the equipment is located (used), abide by professional ethics, pay attention to safety obligations, and strictly prohibit the use of our products or equipment for any illegal purposes. Piocreat will not be responsible for any violators' legal liability under any circumstance.

Contents

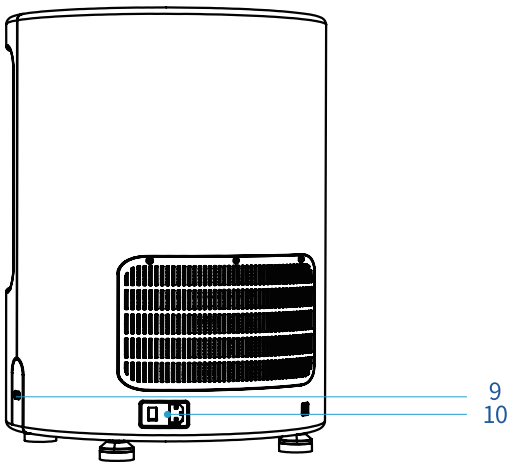
1 Introduction	01
2 Parameters	02
3 Parts List	02
4 Interface Information	03
5 Level Platform	03
6 Guidance on the use of Pre-Heat	05
7 Load Resin	06
8 Release Film Instructions	06
9 USB Disk Printing	07
10 WIFI Print	09
11 Wiring Connection	10
12 Troubleshooting	11
13 After-Sales Service Card	12



1. Introduction



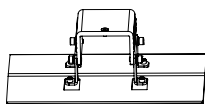
- 1 Heating device
- 2 Platform handle
- 3 Leveling screw
- 4 Building platform
- 5 Resin vat handle
- 6 Resin vat
- 7 Flip-able display
- 8 Status LED
- 9 USB port
- 10 Power port



2. Equipment Parameters

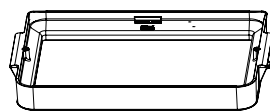
Model	EZPRINT-F1
Molding chamber heating	Support, temperature range 20-35°C
Print method	U disk, WiFi
XY axis resolution	15120×6230
XY axis accuracy	14×19μm
Z-axis resolution	0.05-0.1mm(layer thickness)
Print speed	Max. 60mm/h
Available resin	Dental model, Surgical guide, Splint, Casting wax, Gingiva, Tryin, Third party resin are supported
Light source configuration	405nm COB light source
Operation system	Win7 or above X64, Mac
Nominal power	650W
Nominal voltage	100-240V~, 50-60Hz
Print size	211.68×118.37×100mm (length×width×height)
Machine size	440×400×536mm (length×width×height)
Machine weight	23KG
Gross weight	29.5KG

3. Package Content



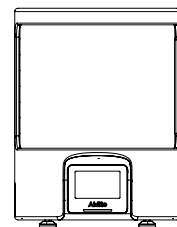
1

Print platform



2

Resin vat



3

3D printer

Tool list



1 U disk x 1



2 Screwdrivers x 1set



3 Brush x 1



4 Plastic blade x 1



5 Resin filter x 4



6 Metal blade x 1



7 Power cord x 1



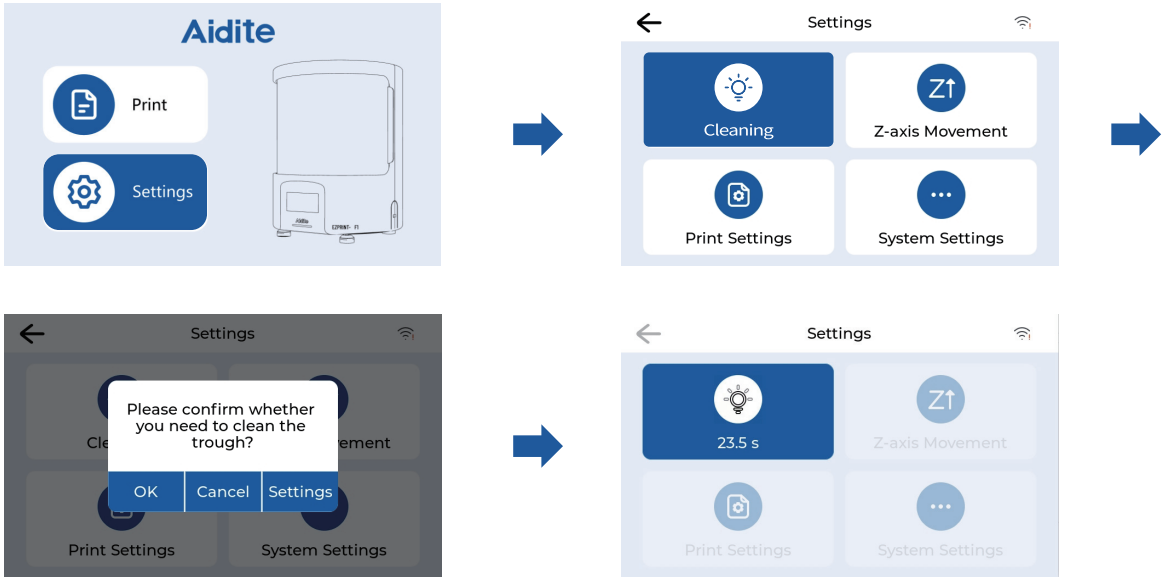
8 Disposable latex gloves x 1

Tips: the above accessories are for reference only, in kind prevail!

4. Interface Information



4. Interface Information



Screen clearing: Material tank cleaning;

Z-axis movement: Back to Zero and leveling;

Print settings: Printing parameters, device control, feeding system and Pre-Heat;

System settings: Set WALN, set language and region, upgrade firmware version (local upgrade & network upgrade); view device information, restore factory settings.

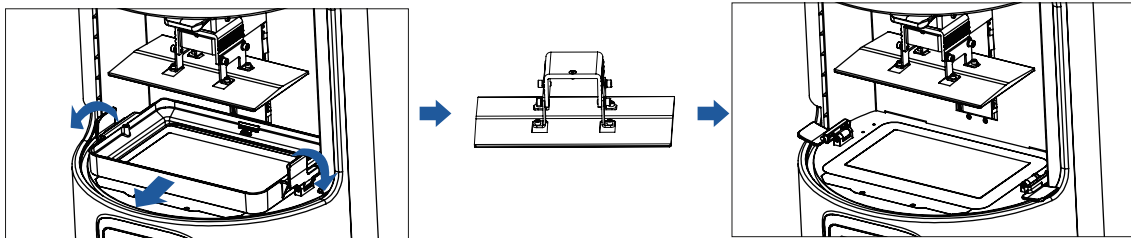


Note: Check whether the light source is normal when clearing the screen. The UI is only for reference only and shall be subject to the actual UI.

5. Level Platform



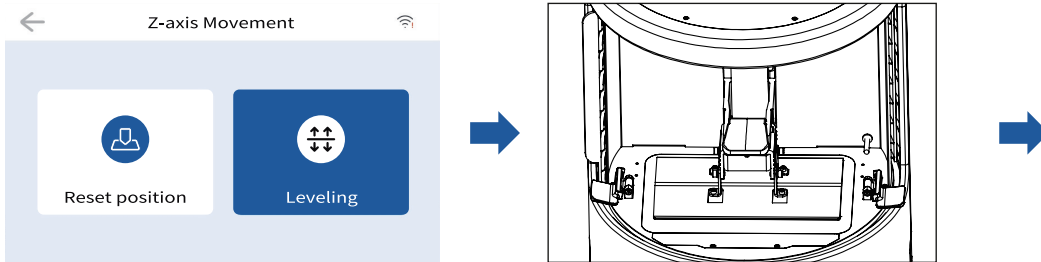
Note: The printing platform has been leveled at the factory. If it needs leveling due to transportation or other reasons, please follow the steps below to adjust the printing platform.



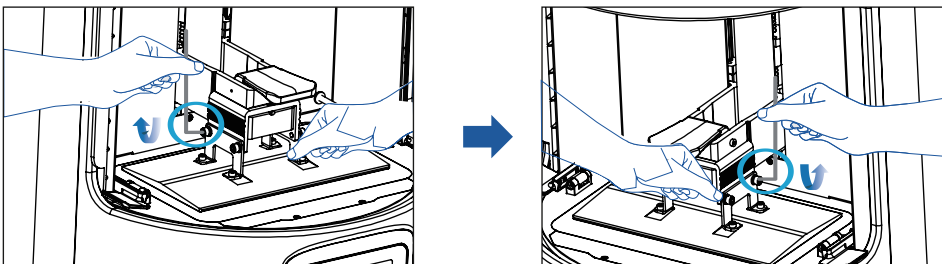
1. First raise the platform, use both hands to turn the fixings outwards, and take out the resin vat.

2. As shown above.

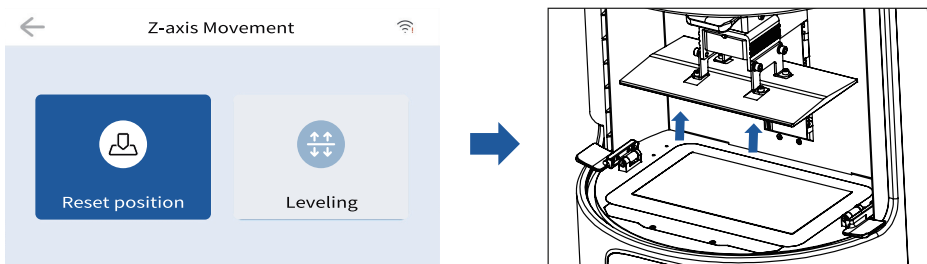
If the platform does not stick to the print screen, do as the following:



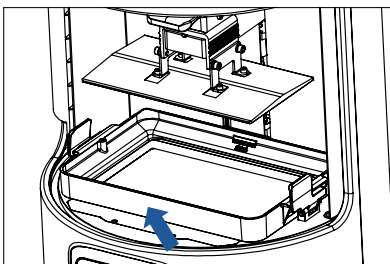
1. After unscrewing the leveling screws, press "Leveling" to keep the platform and the print screen parallel.



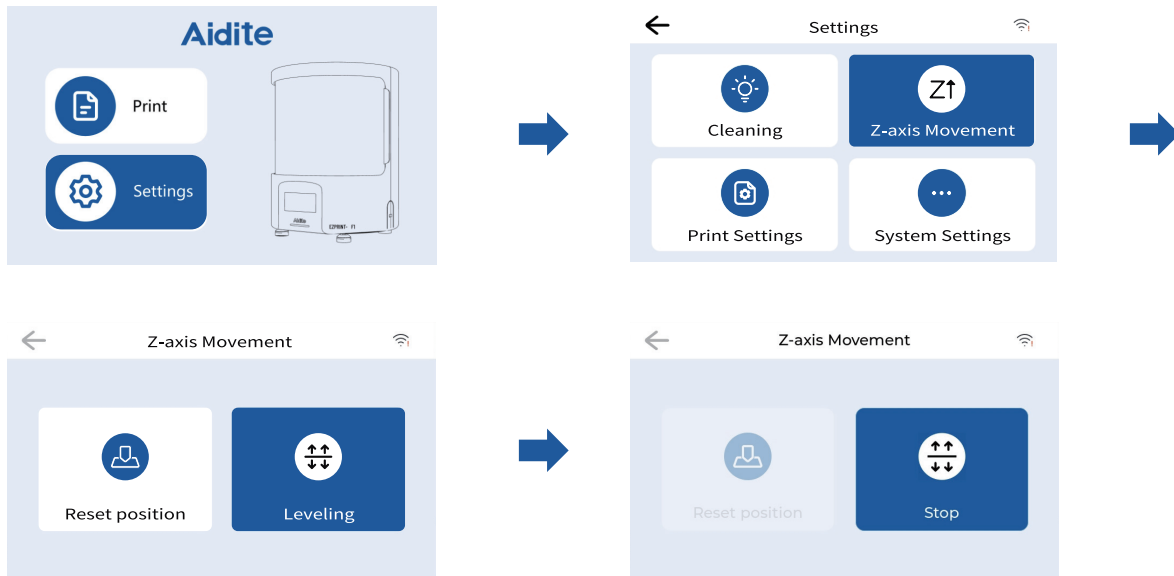
2. Gently press the platform and tighten 4 screws clockwise, and the platform can be leveled successfully.



3. Press "Reset positioning", move up the z-axis to a proper position, and then use both hands to flip the fixings on both sides inward to secure the resin vat.



6.Guidance on the use of Pre-Heat

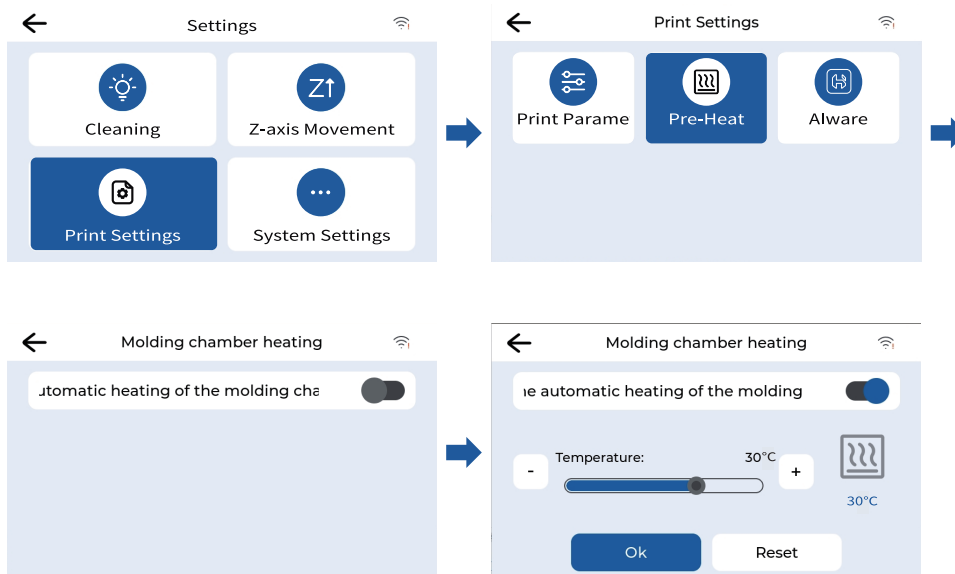


Note: The UI is only for reference only and shall be subject to the actual UI.

6.Guidance on the use of Pre-Heat

[Open Auto Pre Heat] : Turn on this function to detect the temperature of the printing area in real time for heating during the printing process. You can customize the temperature according to the printing environment requirements, and then click OK to start the heating device of the forming room.

After reaching the set temperature, the device stops working, the heating device continues if detected the temperature of printing area is lower than the set temperature.

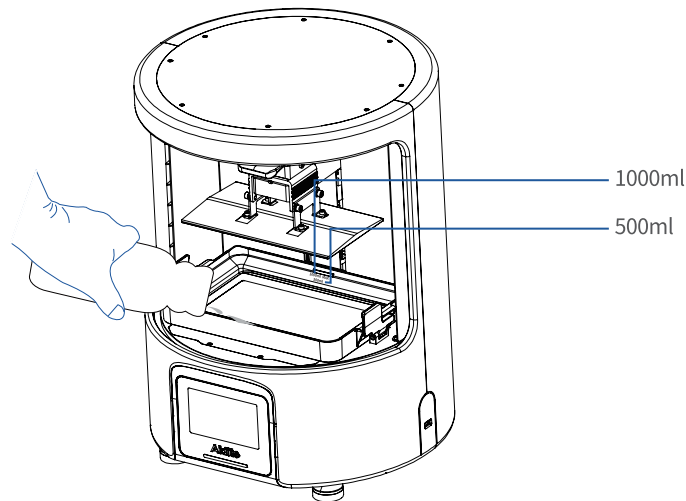


Note: The UI is only for reference only and shall be subject to the actual UI.



7. Load Resin

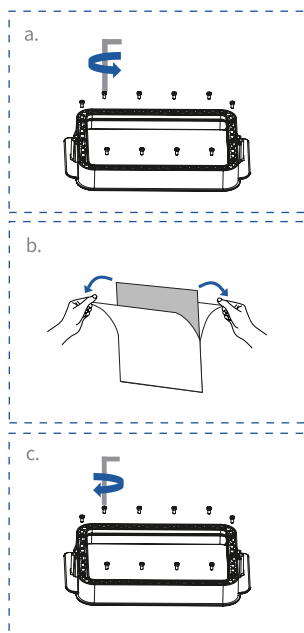
Pour the UV photosensitive resin into the resin vat. The slot capacity is 500ml/1000ml.



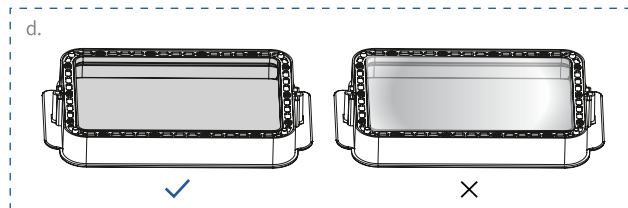
Tips: How to change resin:
Take out the resin vat slowly, pour out the remaining resin into the container, clean the resin vat, pour in new resin, and then install the resin vat to the machine.

Caution : Resin may cause skin irritation or an allergic skin reaction. Please wear gloves before use to avoid direct contact with the skin. The optimal working condition is when the resin volume is between 500ml and 1000ml. Do not add resin beyond the 1000ml capacity line.

8. Release Film Instructions



- a. First, remove the 14 screws at the bottom of the vat and take down the old release film.
- b. Gently remove the protective film on the front and back of the release film.
- c. Use the release film fixing plate to press the release film into the bottom of the vat, and tighten the screws diagonally across from each other one at a time. (Note: Make sure there are no debris between the fixing plate and release film)
- d. Make sure the release film is flat and tight after installation. (Note: If not flat or loose, please check whether the screws are locked or the release film is abnormal)



Parameters



Size: 198mm*286mm



Thickness: 0.15mm

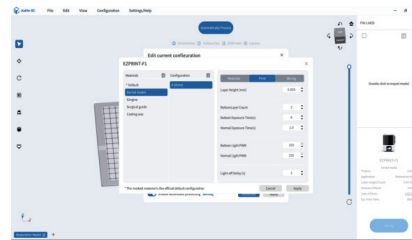
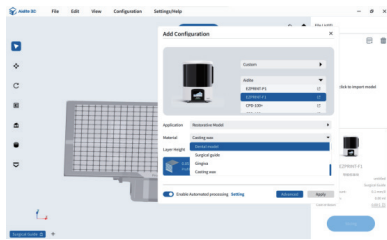


Light Transmittance : 95%

- Tips:** ① The diagram is a reference for the film change procedure, please refer to the physical product; if there are excess edges after installation of the release film, you will need to cut them off.
② It is recommended to replace the release film when it has been used for more than 200 hours.

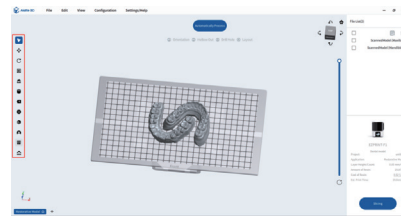
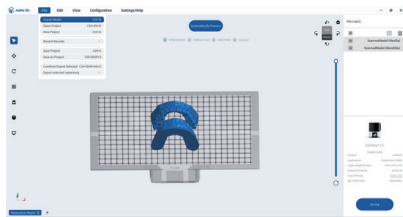
9. USB Disk Printing

1. Slice



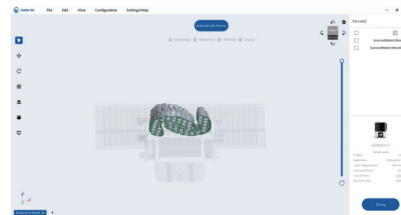
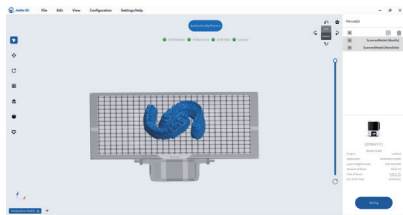
1. Open the Dental slicing software
 →① Click “Configuration” in the above printer column to add a device model;
 →② Click “Aidite” on the middle of the interface to import the model file;
 →③ Click “Next” ;

2. Set the print parameters
 →① Click “Advanced “, select Materials in left list, you can use built-in settings or add new material and configuration;
 →② Click “Print” or “Slicing” to set parameters manually;



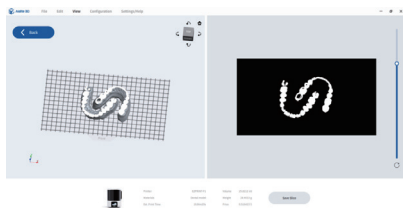
3. Import the model
 →① Click on the “File→Import Model” in the upper left corner of the interface
 →② Select stl files and import them into the main interface;

4. Model manual processing
 → The model can be operated through the toolbar on the left, including move, rotation, auto layout, support, hollow out, tagging, filling, drill hole, bridge generator and cutting;



5. Automatically processing
 →You can click the middle button to do auto orientation, hollow out, drill hole and layout;

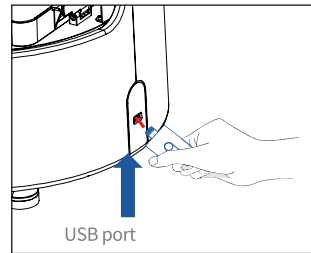
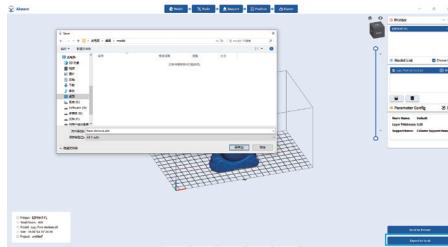
6. Automatically processing
 → ①After automatic processing, the model adheres to the bottom surface, and there are hollows and holes at the bottom of the model;
 → ②Click on the “slicing” button at the bottom right corner of the interface;



7. Save Slice
 → Click the first button to save the sliced file and import to USB flash drive.


Note: The published UI of slicing software shall prevail for the interfaces of Aidite Dental .


2. Print

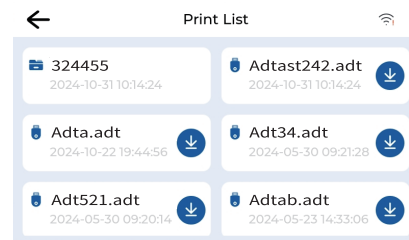
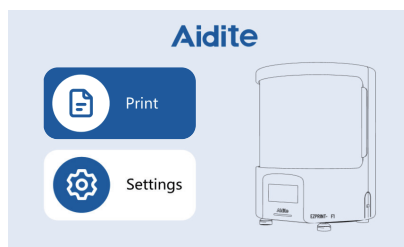


1. Generate .adt file, and save the file to U disk.

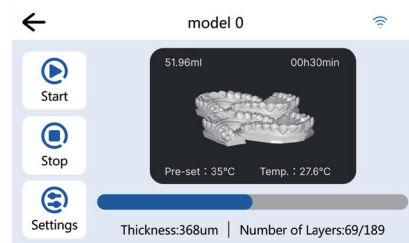
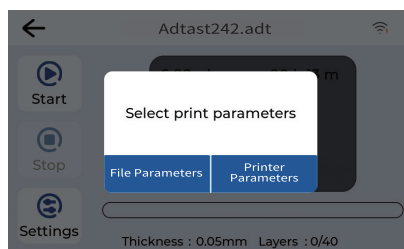
2. Insert the U disk → press the print button.

 Note: The UI interface is for reference only, and shall be subject to the actual UI.

 Warning: During the printing process the machine can't be shaken, so as not to avoid influencing affect the printing quality. Opening the door during printing will trigger a pause, and affecting print quality.

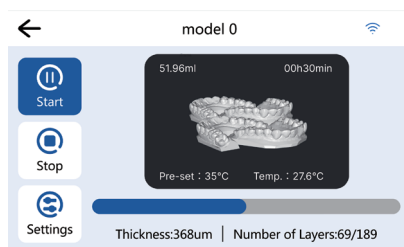


1. Select USB disk files;




2. Choose to use parameters;

3. Press "Start" button



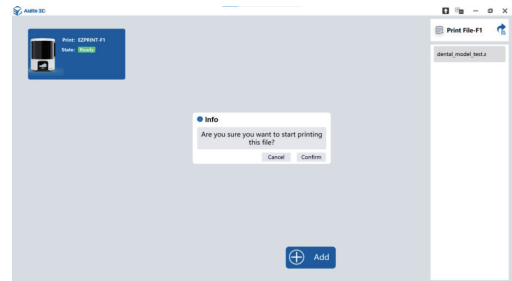
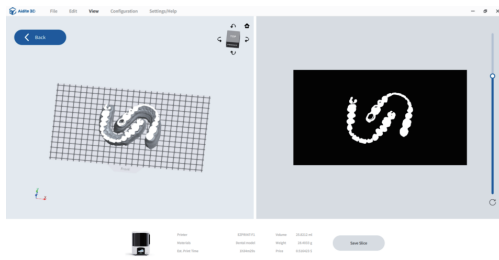
4. Printing...

 Note: The UI is only for reference only and shall be subject to the actual UI.

10. WIFI Print

10. WIFI Print

1. Slice

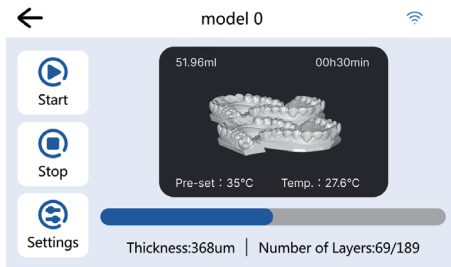


1. WiFi Print

- ① Make sure the printer and slicing software are connected to the same WiFi network
- ② Click the second button and send the sliced file to the printer remotely;

2. Start printing remotely

- ① The list on the right shows the sliced files that have been sent to the printer.
- ② Click the button to confirm and start printing;

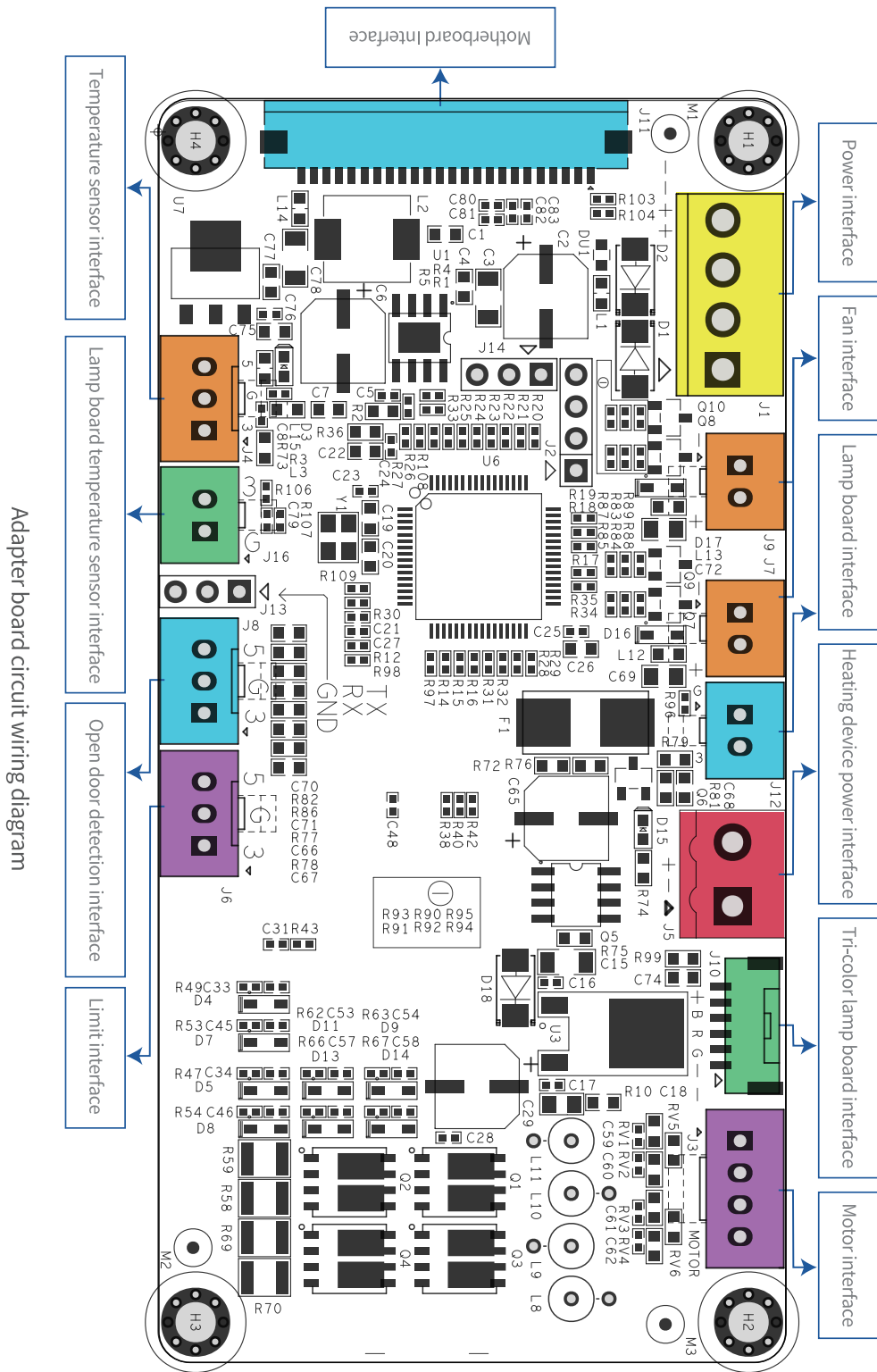


3. Printing.



Note: Make sure the Alware and the printer are connected to the same WiFi.

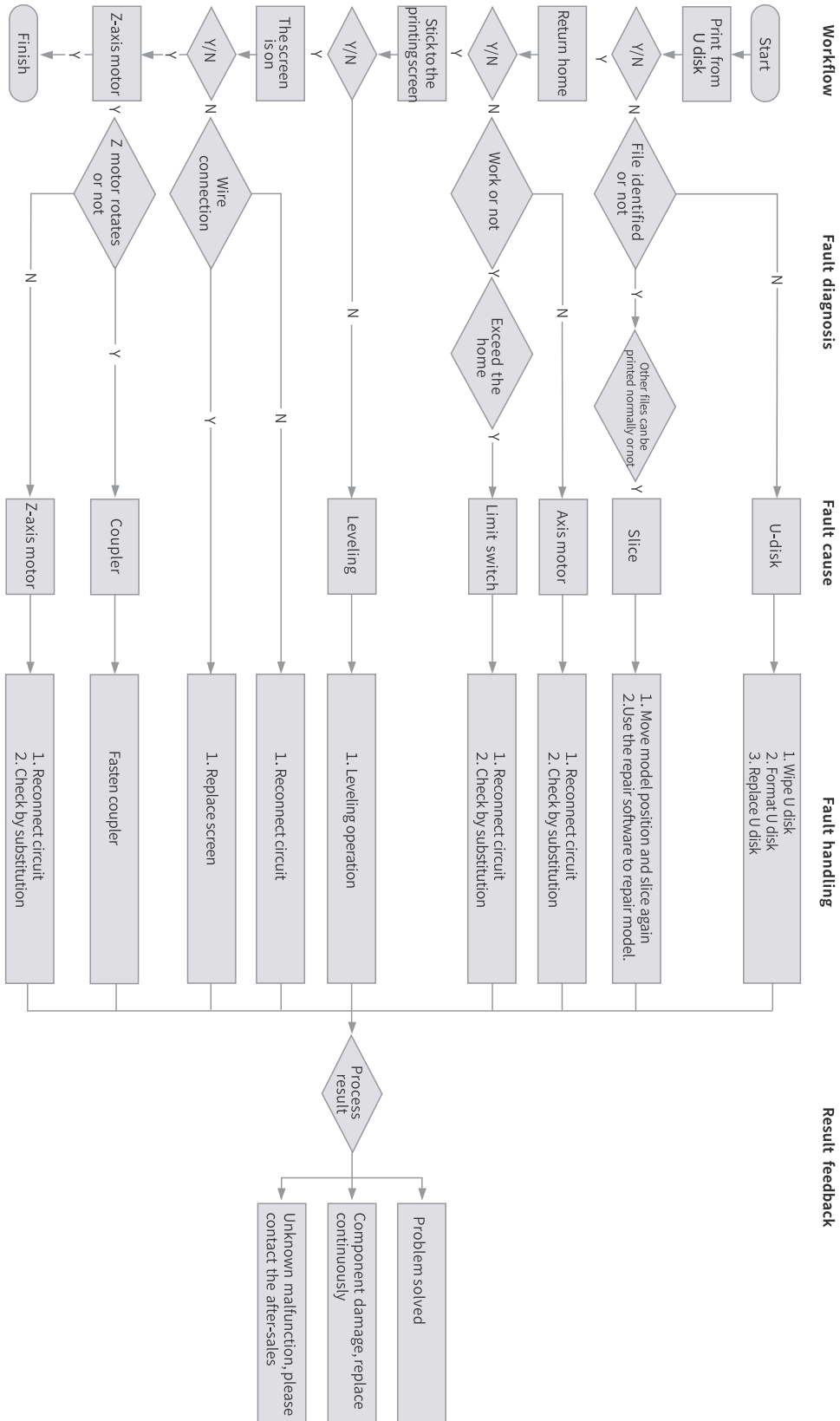
11.Wiring Connection



Adapter board circuit wiring diagram



12.Troubleshooting





13.After-Sales Service Card

Warranty Policy ←

- 1-year Limited Warranty since the date of product purchase.
- No Warranty for the Release Film and Product Gift (U disk, Gloves, Screwdriver, Paper funnel, Brush, etc.)

What Is Covered? ←

Any defects in material, workmanship of product will be covered until you provide any relating documents and information, including but not limited to:

- User of the product are in the country of purchase
- Defective product is a Aidite product
- Proof of Purchase

What Is Not Covered? ←

Aidite does not guarantee the service as a result of:

- 1.The proof of purchase being altered or made illegible.
2. The product label or serial number on the product being altered or made illegible.
- 3.Normal wear of accessories or consumables for use as release flm.
4. Malfunction or damage caused by personal retrofitting, or improper installation and usage
5. Malfunction or damage caused by use in non-recommended working environments.
6. Malfunction or damage caused by overuse (overload) or wrong maintenance (damp, mildew, etc.)
7. Malfunction or damage caused by Force Majeure (fre hazard, earthquake, lightning and floods, etc.)
8. Malfunction or damage caused by the use of other brand parts or consumable.

Technical Support ←

Please enjoy our technical support of the whole lifetime (Except technical problem beyond product itself) after purchase the product while producdocuments as user manual attached in U disk for instruction. Please provide product Serial Number when apply for technical support.

Kindly Notifcation ←

Please read the user manual and warranty card carefully before the use. For any service, Please priory contact local seller or contact us via

Email: info@aidite.com for support. See www.aidite.com/ for specific warranty information about your product and procedures to act on a warranty claim.



WARRANTY

Before returning the product and filling in a warranty, please contact after-sale person for going through after-sale formality. And attach this warranty card along with the returned machine.



Repair Change Return

Name: _____ Telephone: _____

Address: _____

Serial Number: _____ Order Number: _____

Channel: Platform Offline

Date of purchase Day _____ Mon. _____ Year _____

Malfunction And Damage Depiction Or Return And Change Reasons\ Suggestions:

Repair Records:



Note: Client need filling in basic infor. and return reasons. Repair records shall retain for technicians.



■ Due to the differences between different machine models, the physical objects and the final images can differ. The final explanation rights shall be reserved by Aidite (Qinhuangdao) Technology Co., Ltd.

Aidite

Aidite (Qinhuangdao) Technology Co.,Ltd.
Tel : 0086-335-8587898
Fax: 0086-335-8587198
Web: www.aidite.com
Email: info@aidite.com



www.aidite.com



Facebook